



## Industrial Hemp Farms

Denver, CO 80216  
 jack@industrialhempfarms.com  
 (913) 991-8022

## Sample 280-062421-121

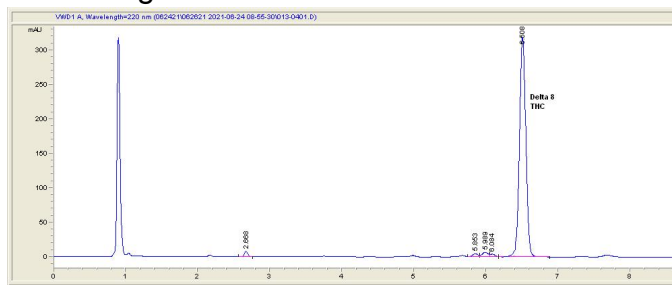
D8 Gummy 25mg Green Apple  
 Batch/Lot # 06371HF22 PVR  
 Sample Submitted: 06-24-2021; Report Date: 06-24-2021  
 nullSample Unit Size: 4.42 g

## D8 Gummy 25mg Green Apple

Edible: Candy

## Batch/Lot # 06371HF22 PVR

### Chromatogram



### Cannabinoid Profile



### Cannabinoid Profile by HPLC

**0.00%**  
Calculated THC Yield

**0.00%**  
Calculated CBD Yield

**0.61%**  
Total Cannabinoids

Cannabinoid	% wt	mg/unit
Delta-8-THC	0.614	27.14
THC	0.0	0.0
<b>Total Cannabinoids</b>	<b>0.61</b>	<b>27.1</b>
<b>Calculated THC Yield</b>	<b>0.00</b>	<b>0.00</b>
<b>Calculated CBD Yield</b>	<b>0.00</b>	<b>0.00</b>

Calculated Maximum THC Yield = THC + 0.877 \* THCA  
 Calculated Maximum CBD Yield = CBD + 0.877 \* CBDA

**Marin Analytics, LLC**  
 250 Bel Marin Keys Blvd, Suite D4  
 Novato, CA 94949  
 415-936-6477 / sarabiancalana1@gmail.com

*Sara Biancalana*  
**Sara Biancalana**  
 Chief Scientist

This sample has been tested by Marin Analytics, LLC using valid testing methodologies and a quality system. Values reported relate only to the sample tested. Marin Analytics, LLC makes no claims as to the efficacy, safety or other risks associated with any detected or non-detected levels of any compounds reported herein. This Certificate shall not be reproduced except in full, without the written approval of Marin Analytics, LLC.