



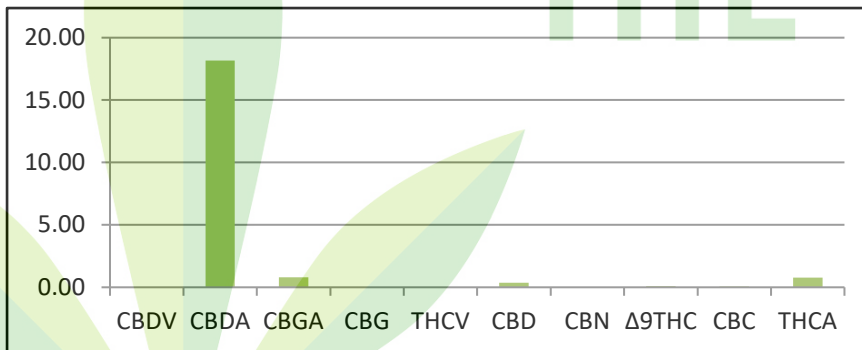
The Good Lab

2501 W Colorado Ave Suite 204
 Colorado Springs, CO 80904
 Info@GoodLabColorado.com
 www.GoodLabColorado.com

Potency Analysis

Customer ID	597	Cust Name	International Hemp Farms		
Sample ID	2001551	Sample Name	Lavender Kush		
Sample Type	Flower	Date Received	12/17/2020	Date Completed	12/21/2020

Cannabinoid Profile %	
CBDV	0.00
CBDA	18.16
CBGA	0.81
CBG	0.00
THCV	0.00
CBD	0.35
CBN	0.00
Δ9THC	0.08
CBC	0.07
THCA	0.77
TOTAL	20.23



Cannabinoid Percentage (%)	Δ9THC Percentage (%)
20.23	0.08

Potency test results are reported in percentage by dry weight using High Performance Liquid Chromatography (HPLC). Detectable amounts below .06% are below our level of quantitation and reported as <LOQ. Our standard detection limit is .02%. Our deviation is within the industry standard for HPLC.

FINAL APPROVAL

Analysis:
 Gregory P. Duran, Lab Owner

Quality Control:
 M. Teri Robnett, Lab Manager

This report and all information herein shall not be changed in any way or reproduced, except in its entirety, without the expressed consent of The Good Lab. This information is provided as a service and makes no claims of efficacy, safety or compliance of this product. Results are reported in percentage by dry weight. Results are applicable only for the sample as presented to The Good Lab and for the specific test conducted. Due to many factors outside The Good Lab's control, results may vary; therefore, we adhere to the cannabis analytical laboratory standard of error of +/- 5%. Cannabinoid content variations may be due to natural variations in the plant and/or inaccurate sampling practices. This report is for informational purposes only and should not be used to diagnose, treat or prevent any medical symptoms or conditions. The statements and results herein have not been approved or endorsed by the FDA. Results are applicable only for the sample supplied to The Good Lab.